



ASHWOOD OFFICE CENTER

4700 ASHWOOD DRIVE
CINCINNATI, OH 45241

FOR LEASE - FULL FLOOR AVAILABILITY!

PROPERTY HIGHLIGHTS

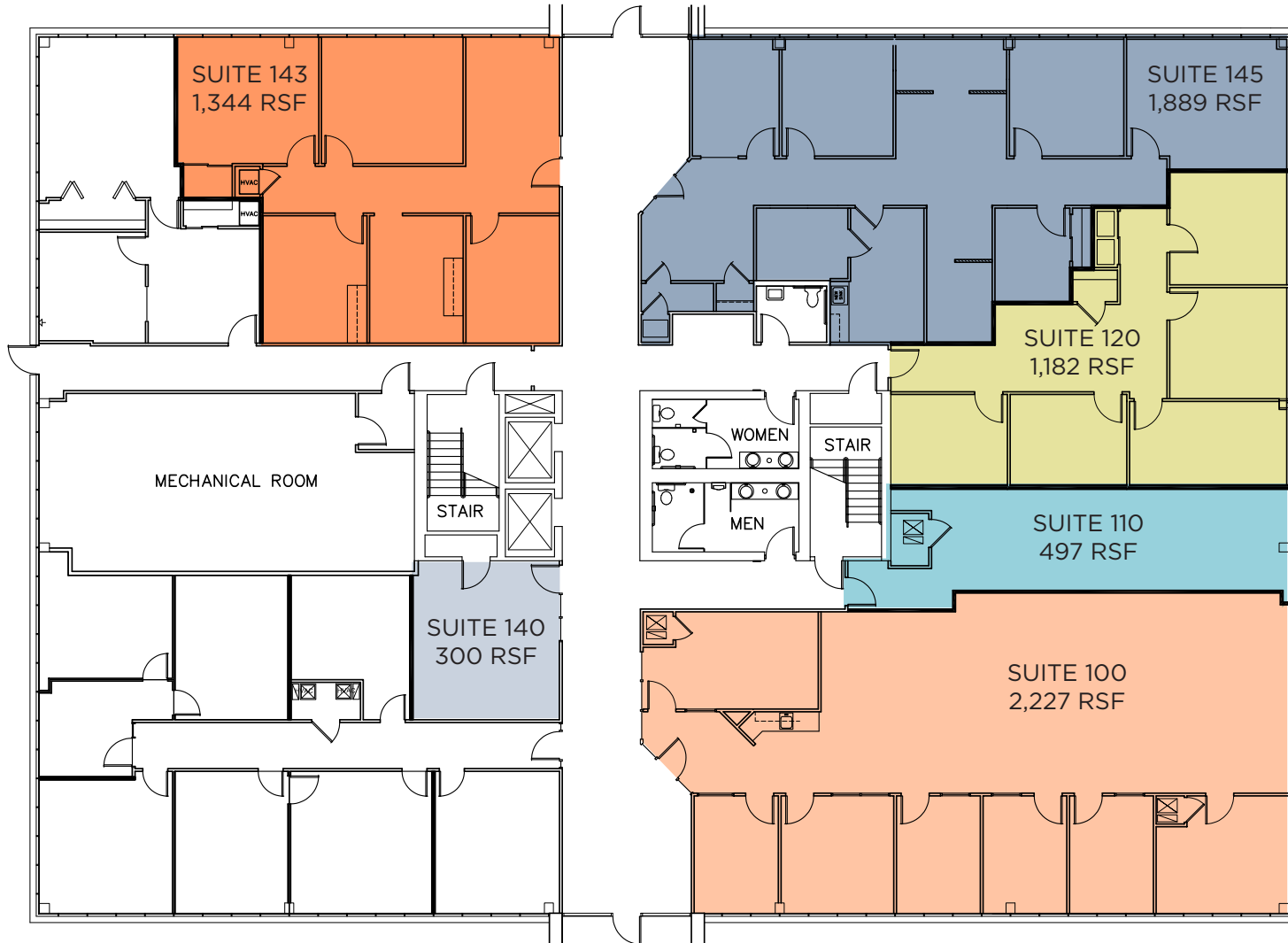
BUILDING SIZE: 48,000 SF
AVAILABLE RSF: 44,521 SF
ASKING RATE: \$14.75/sf + electric

- Full floor availability
- Building signage rights
- Monument sign available
- Ample on-site parking
- Interior build-to-suit options
- Walkable dining options
- Excellent amenity base along Reed Hartman Highway and Cornell Road
- Short distance to I-275 and I-71 interchange
- Just 2 miles from the new Summit Park development



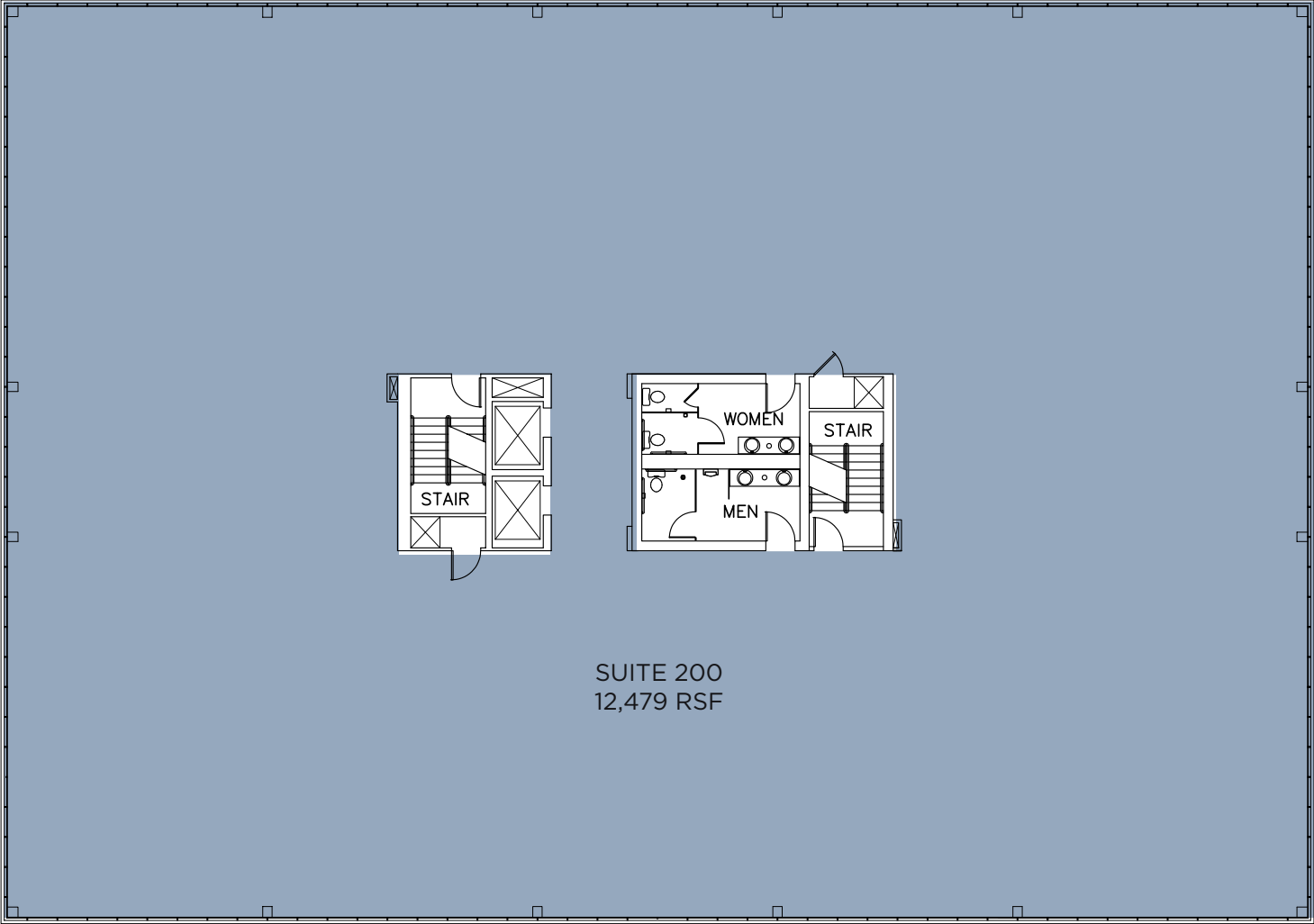
FIRST FLOOR

TOTAL AVAILABLE: 7,439 SF



SECOND FLOOR

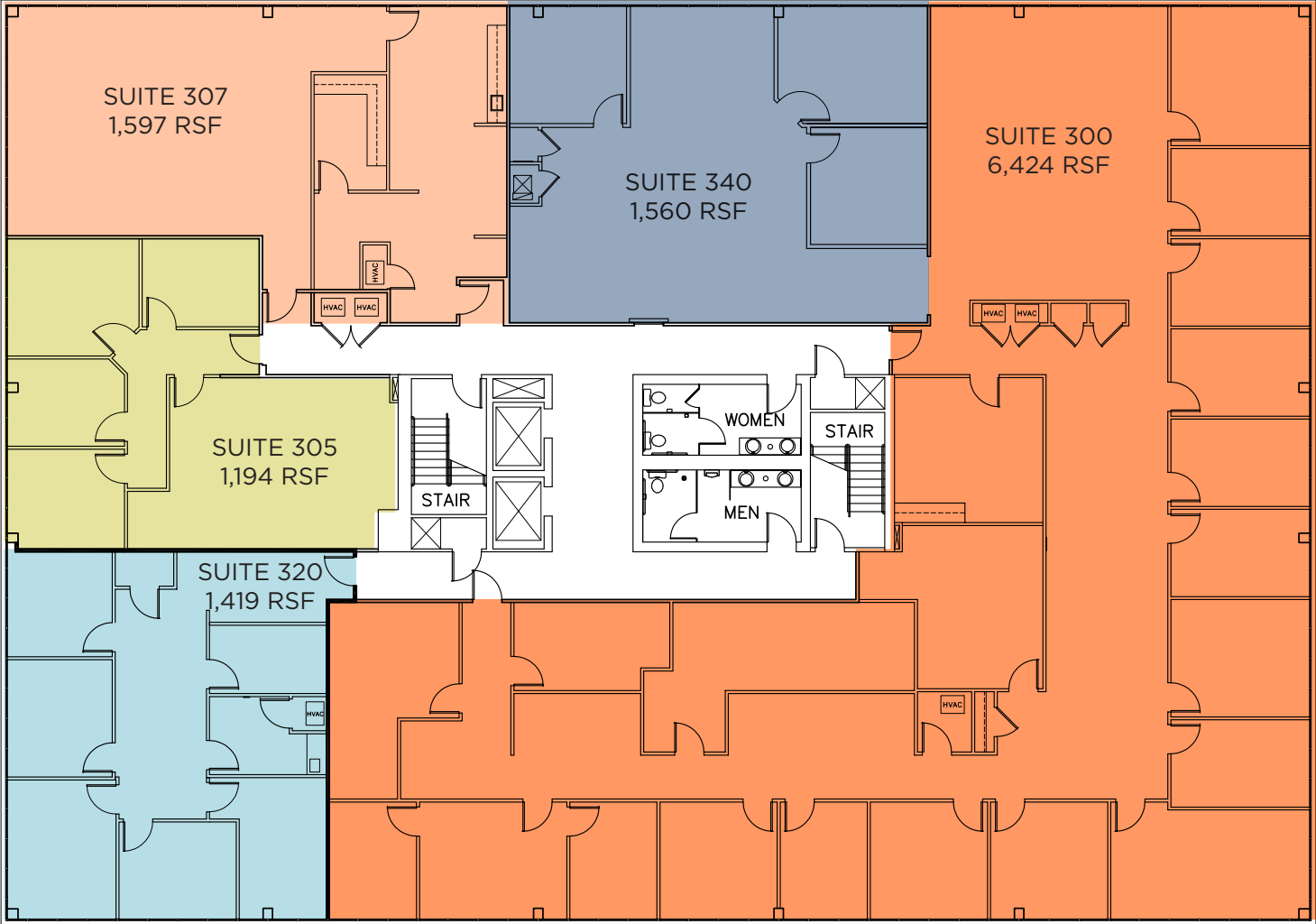
TOTAL AVAILABLE: 12,479 SF



SUITE 200
12,479 RSF

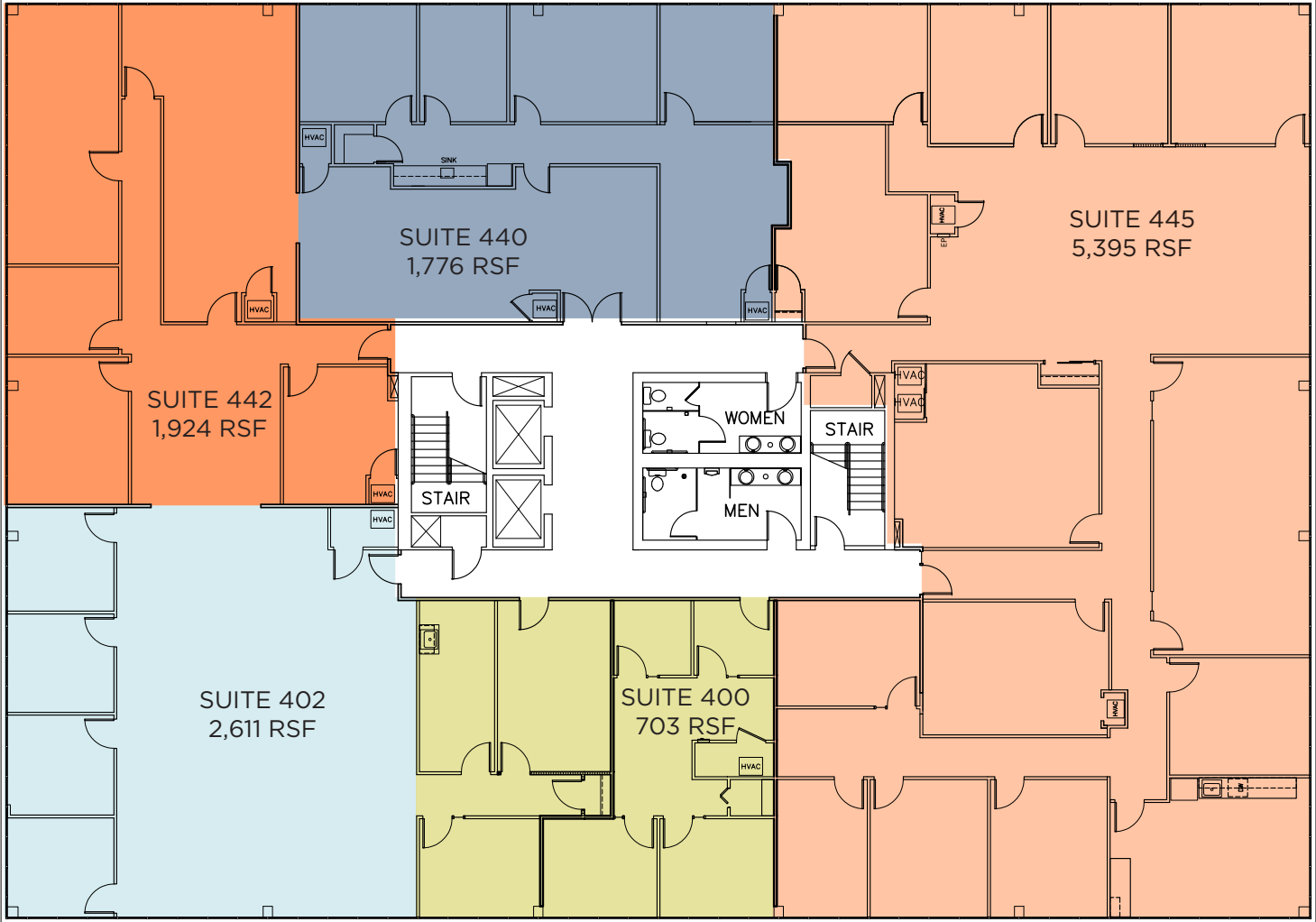
THIRD FLOOR

TOTAL AVAILABLE: 12,194 SF

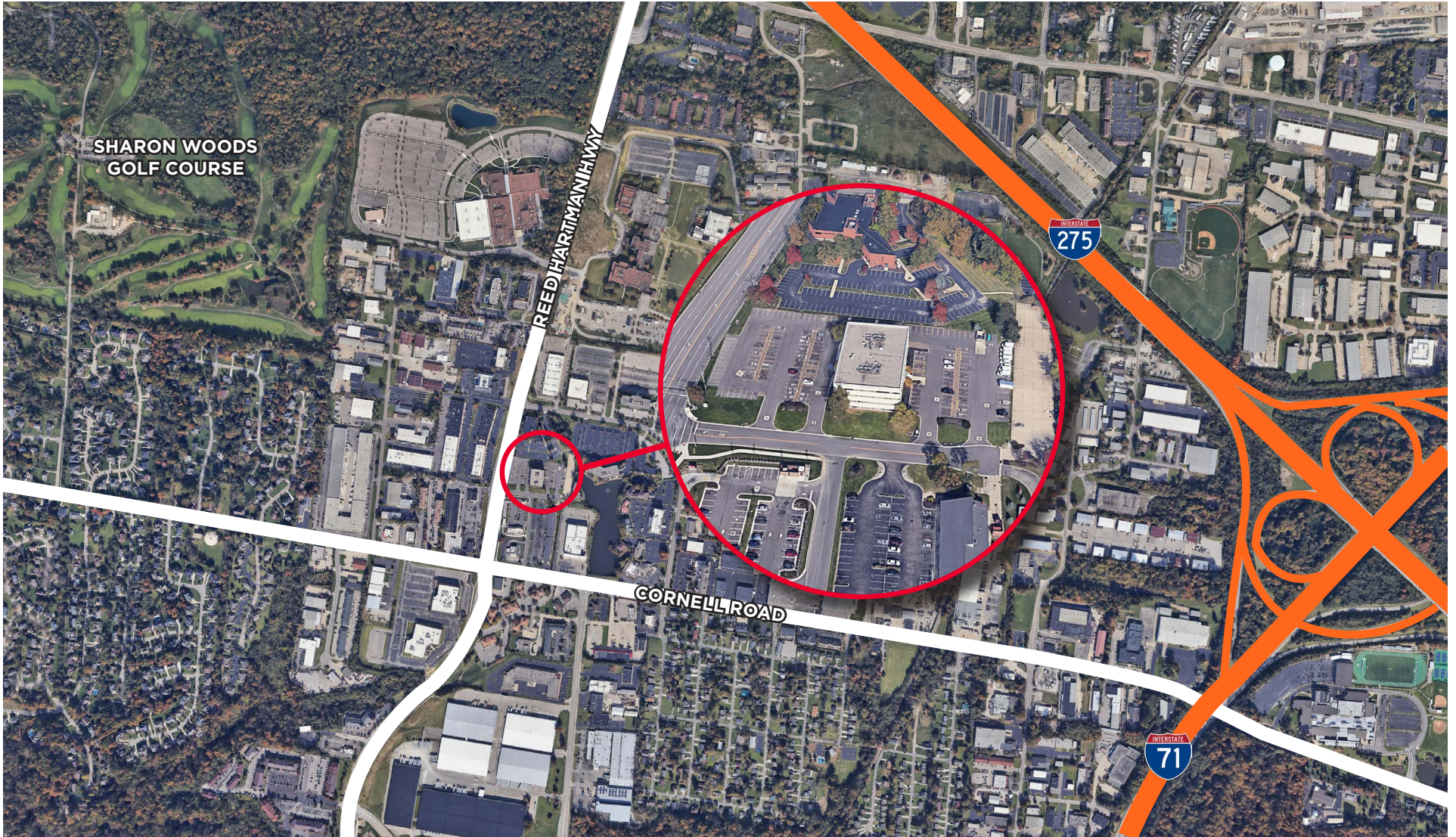


FOURTH FLOOR

TOTAL AVAILABLE: 12,409 SF



LOCATION





For more information, please contact:

Digger Daley
Senior Director
+1 513 763 3028
digger.daley@cushwake.com

Scott Abernethy, CCIM, SIOR
Senior Director
+1 513 763 3013
scott.abernethy@cushwake.com

201 E. Fourth St., Suite 1800
Cincinnati, OH 45202
+1 513 421 4884
cushmanwakefield.com

©2022 Cushman & Wakefield. All rights reserved. The information contained in this communication is strictly confidential. This information has been obtained from sources believed to be reliable but has not been verified. No warranty or representation, express or implied, is made as to the condition of the property (or properties) referenced herein or as to the accuracy or completeness of the information contained herein, and same is submitted subject to errors, omissions, change of price, rental or other conditions, withdrawal without notice, and to any special listing conditions imposed by the property owner(s). Any projections, opinions or estimates are subject to uncertainty and do not signify current or future property performance.