



Columbia Sussex

740 CENTRE VIEW BOULEVARD | CRESTVIEW HILLS, KY

Corporate Campus Opportunities

32 Acre Site

Highly Desired Location



OVERVIEW

The Columbia Sussex headquarters is a stunning state-of-the-art eight-story office building located in Crestview Hills, Kentucky.

Crestview Hills boasts of beautiful homes with lakeside golf course views in aesthetically pleasing neighborhoods, wooded business sites, a four-year liberal arts college and quick, convenient access to I-275, I-75 and I-71.

Columbia Sussex is 15 minutes to downtown Cincinnati and just 10 minutes to the Greater Cincinnati/Northern Kentucky Airport (CVG).

HIGHLIGHTS:

- Abundant parking with room for expansion on approximately 32 acres
- Beautiful lobby and main reception
- Onsite cafeteria and conference room
- Tremendous visibility from I-275
- Tenant balconies on each floor
- Stunning architectural design
- Floor to ceiling glass



AVAILABILITY



30,370 SF Available

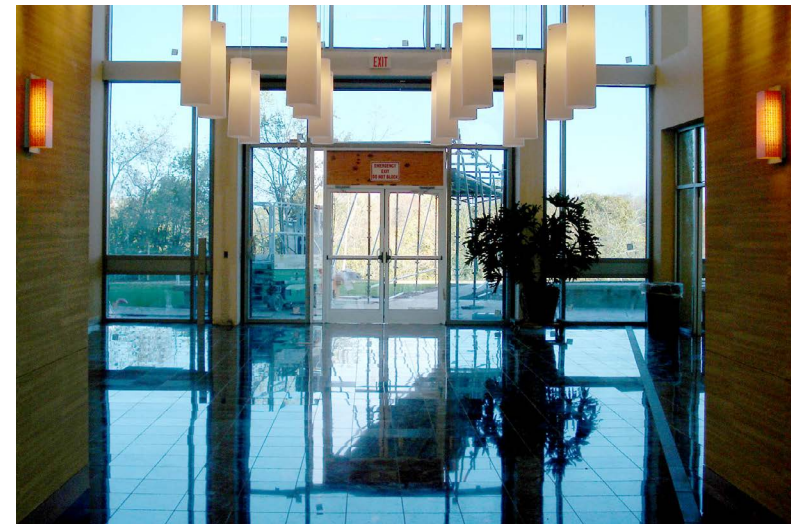
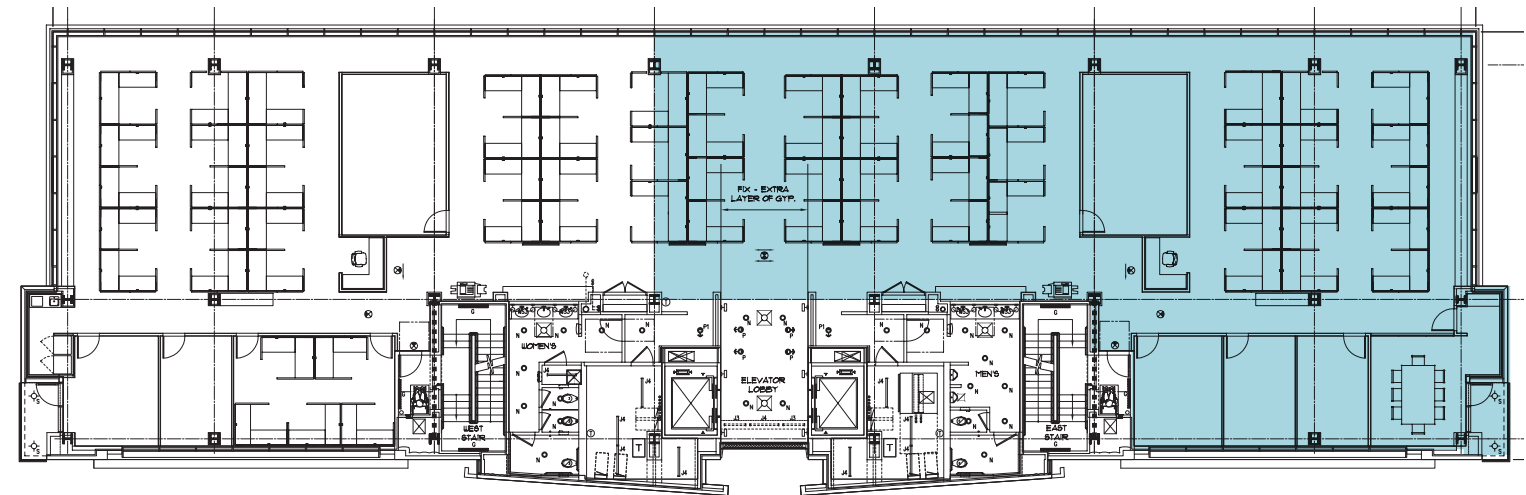
Asking \$24.95 psf

Full Service Gross

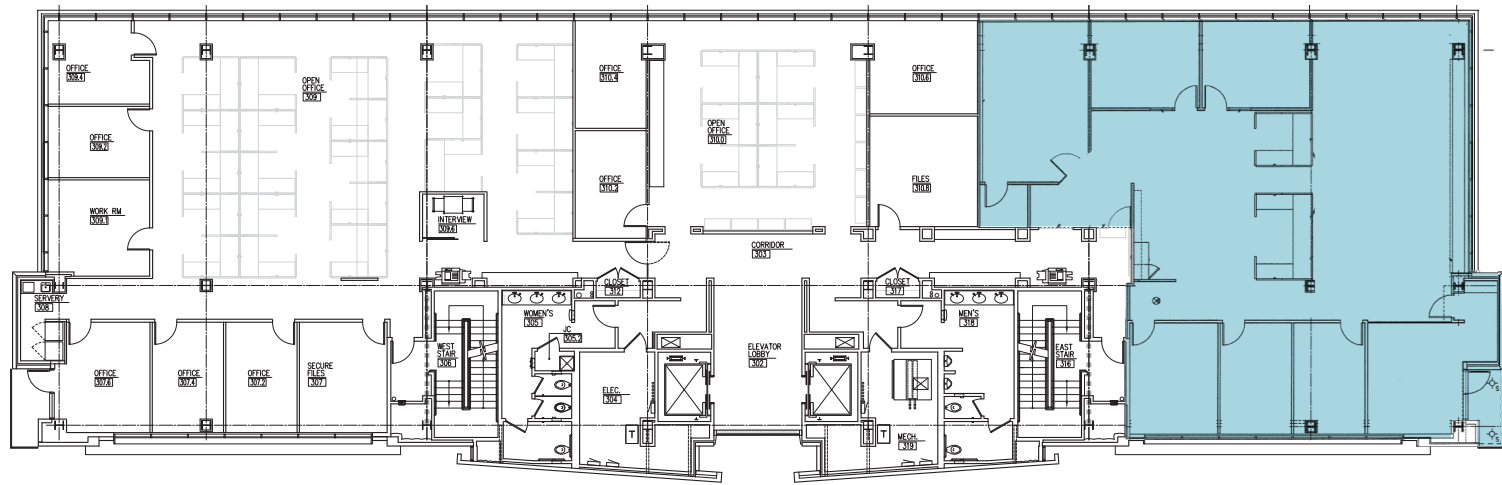
- Full Floors Available
- Full Floors Divisible to 5,000 SF
- 10,350 SF Floor Plates
- Breakthrough Valley View

SECOND FLOOR

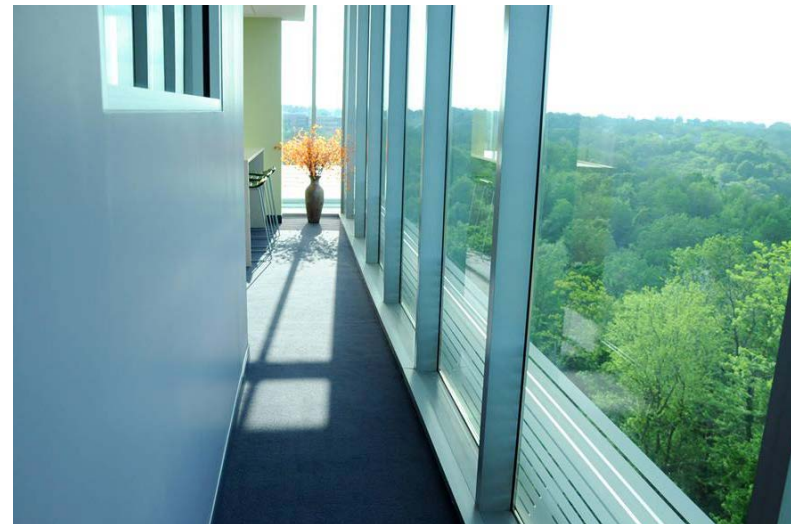
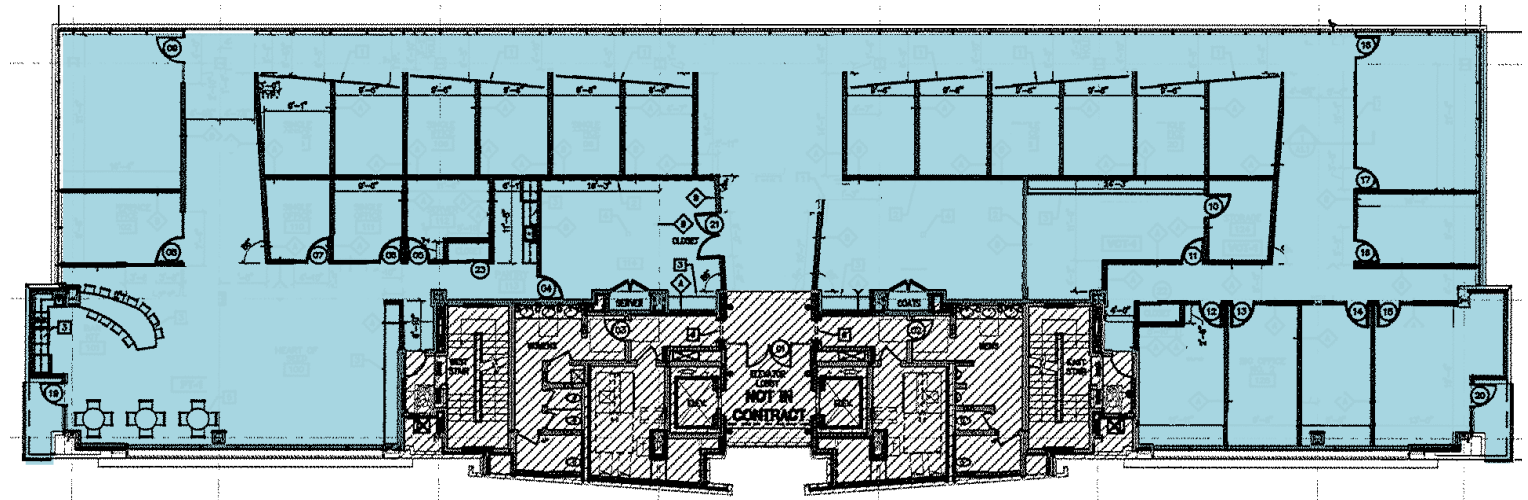
5,834 SF



THIRD FLOOR
3,836 SF

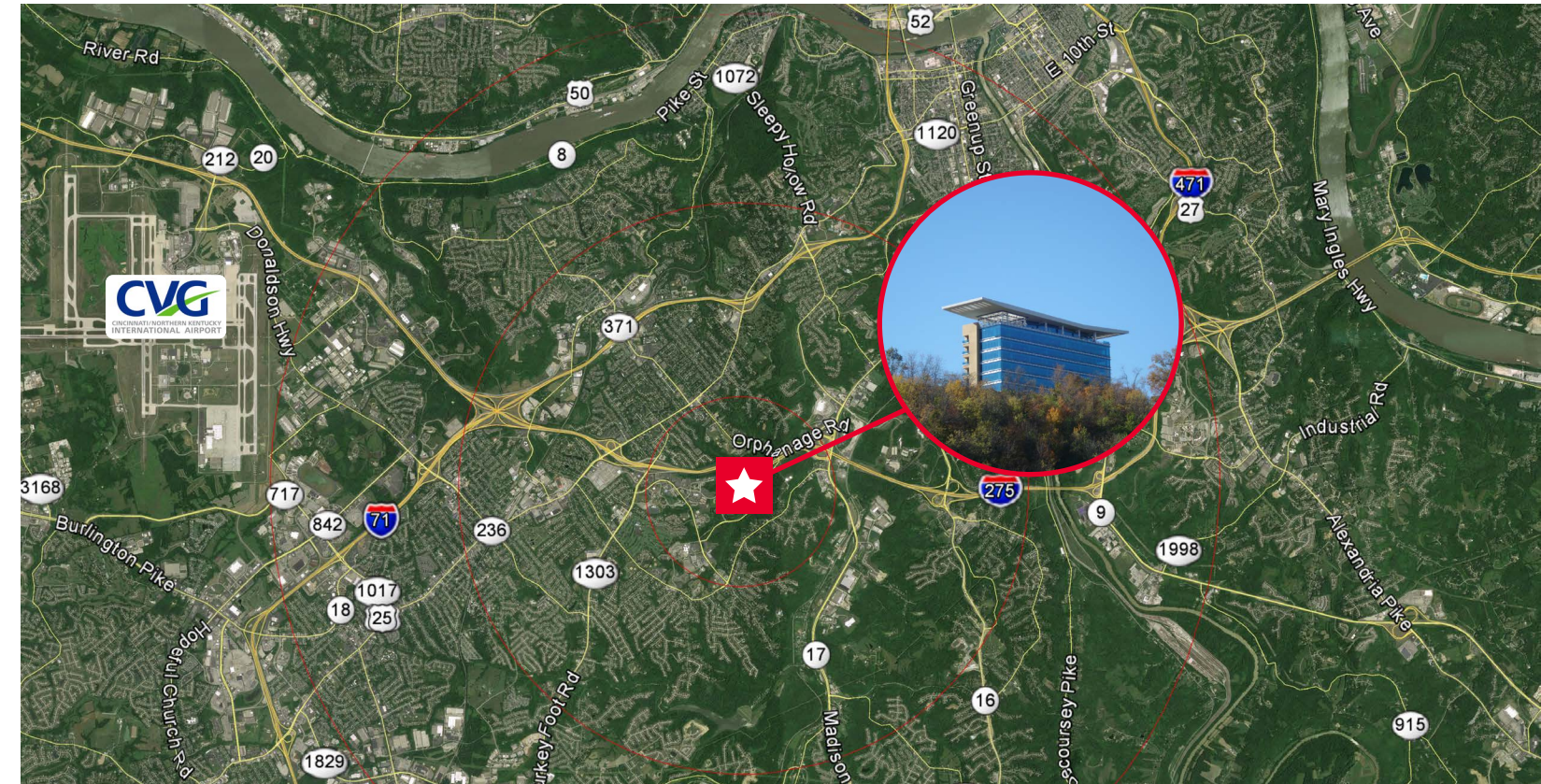
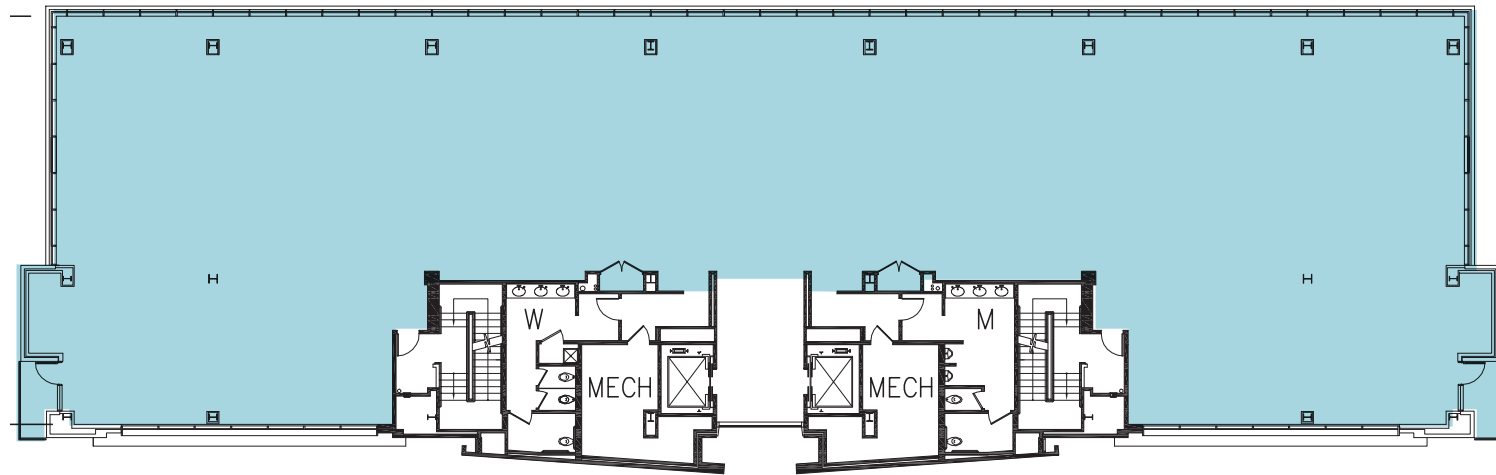


SIXTH FLOOR
10,350 SF



LOCATION, ACCESS, AND VISIBILITY

SEVENTH FLOOR 10,350 SF

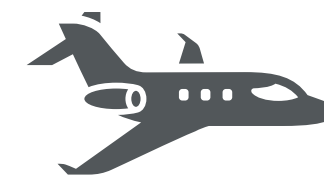


LOCATION BY THE NUMBERS



Immediate access to I-275 with quick access to I-71/I-75 and I-471

Retail-like visibility on I-275 for corporate recognition



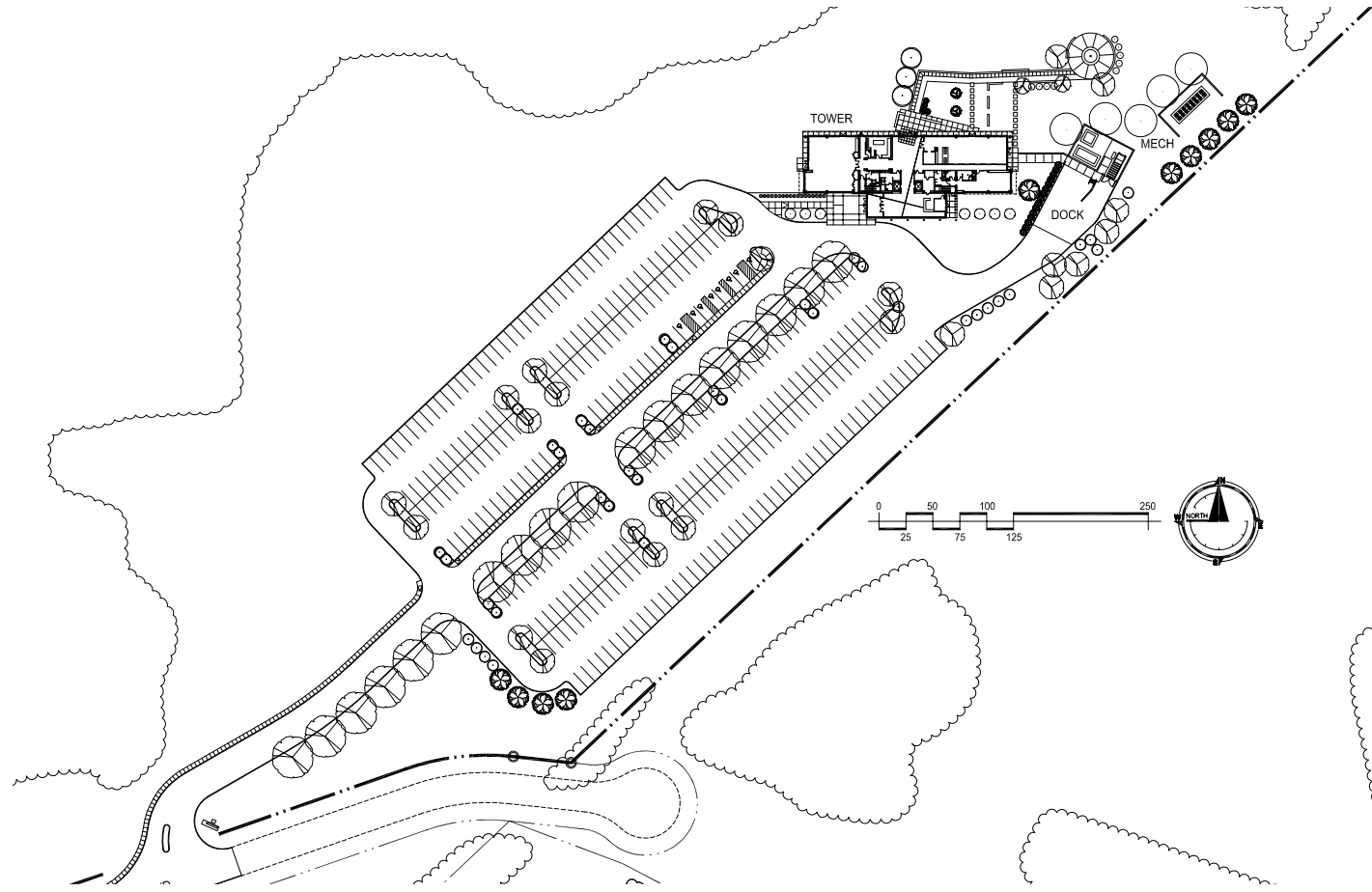
The CVG Airport has an estimated average **762,924** passengers monthly



I-275 has nearly **102,000** average daily vehicles passing through Crestview Hills



SITE OVERVIEW



For more information contact:

ACCESS

