



FOR SALE

LAND SITE

The Commons at Landen

8153 & 8205 Corporate Way
Mason, OH 45040

\$250,000 / ACRE

DIGGER DALEY

Director
+1 513 763 3028
digger.daley@cushwake.com

SCOTT ABERNETHY, SIOR, CCIM

Senior Director
+1 513 763 3013
scott.abernethy@cushwake.com

PROPERTY HIGHLIGHTS

1.850 acres

148' of I-71 frontage

Deerfield Township

Zoned Office

All utilities on site



**CUSHMAN &
WAKEFIELD**

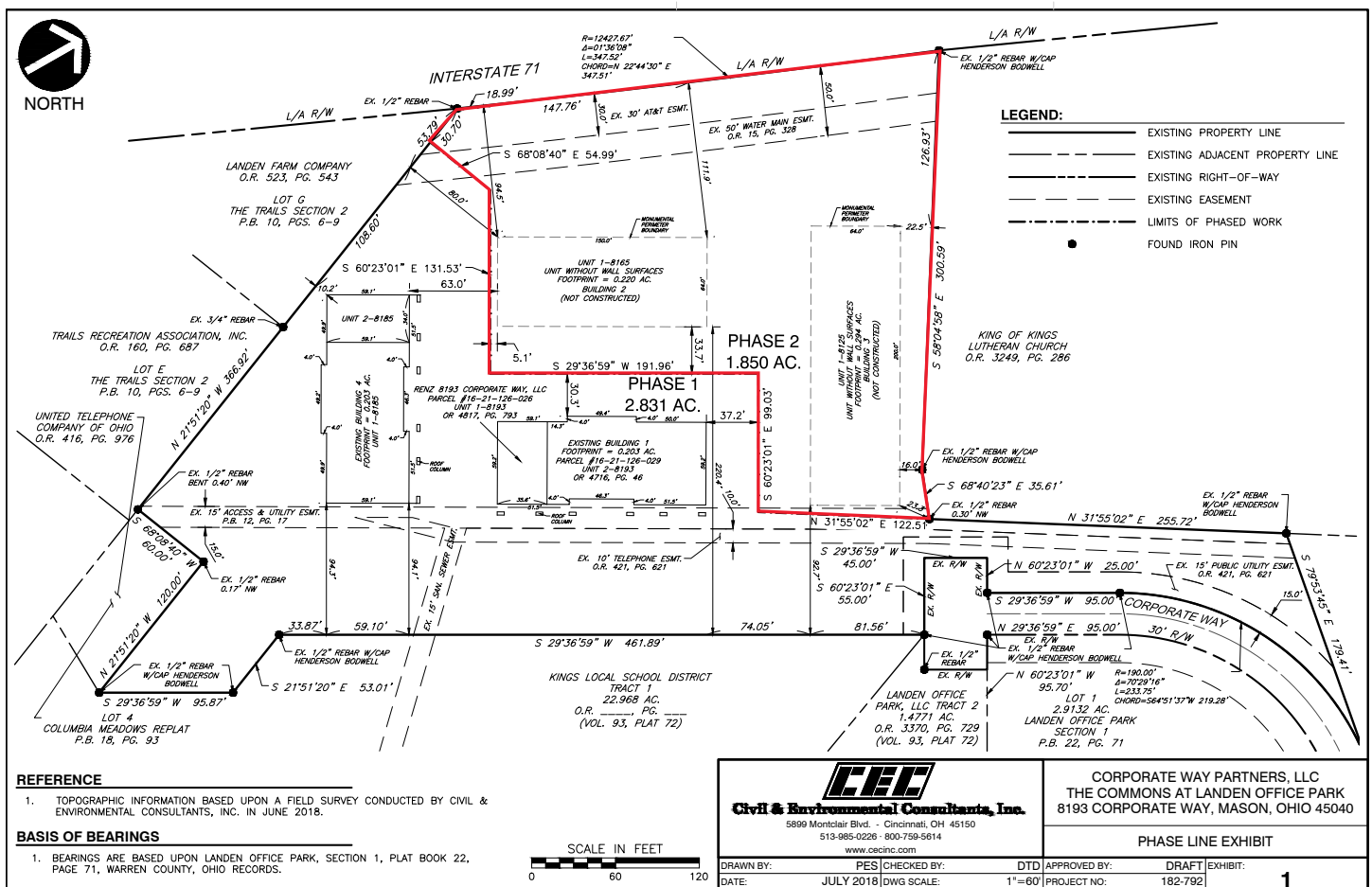
LAND SITE

The Commons at Landen

8153 & 8205 Corporate Way, Mason, OH 45040

\$250,000 / ACRE

AERIAL MAP



DIGGER DALEY
Director
+1 513 763 3028
digger.daley@cushwake.com

SCOTT ABERNETHY, SIOR, CCIM
Senior Director
+1 513 763 3013
scott.abernethy@cushwake.com

201 E. Fourth St., Suite 1800
Cincinnati, OH 45202
Main +1 513 421 4884
Fax +1 513 421 1215
cushmanwakefield.com

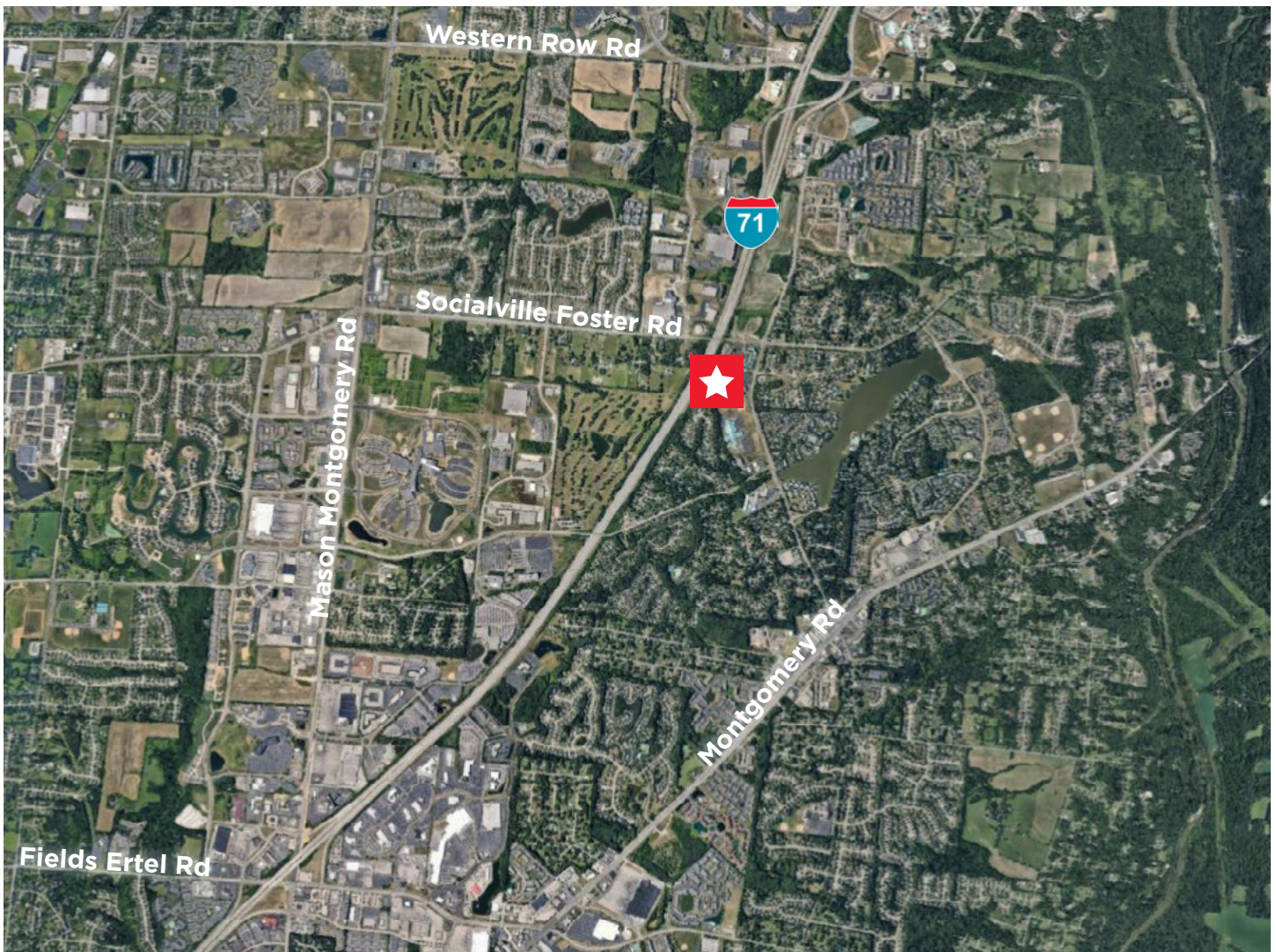
LAND SITE

The Commons at Landen

8153 & 8205 Corporate Way, Mason, OH 45040

\$250,000 / ACRE

AERIAL MAP



DIGGER DALEY

Director
+1 513 763 3028
digger.daley@cushwake.com

SCOTT ABERNETHY, SIOR, CCIM

Senior Director
+1 513 763 3013
scott.abernethy@cushwake.com

201 E. Fourth St., Suite 1800
Cincinnati, OH 45202
Main +1 513 421 4884
Fax +1 513 421 1215
cushmanwakefield.com