

FOR LEASE

# KENWOOD CORPORATE CENTER

  
BLUE ASH, OHIO 45242



# KENWOOD CORPORATE CENTER



Located at 9395 Kenwood Road in Blue Ash Ohio, Kenwood Corporate Center sits directly off Ronald Regan Highway.

Monument signage on Kenwood Road as well as the opportunity for prominent building signage.

6,129 SF available on the first floor. Full second floor available totaling 18,144 SF, that is divisible.

## PROPERTY FEATURES

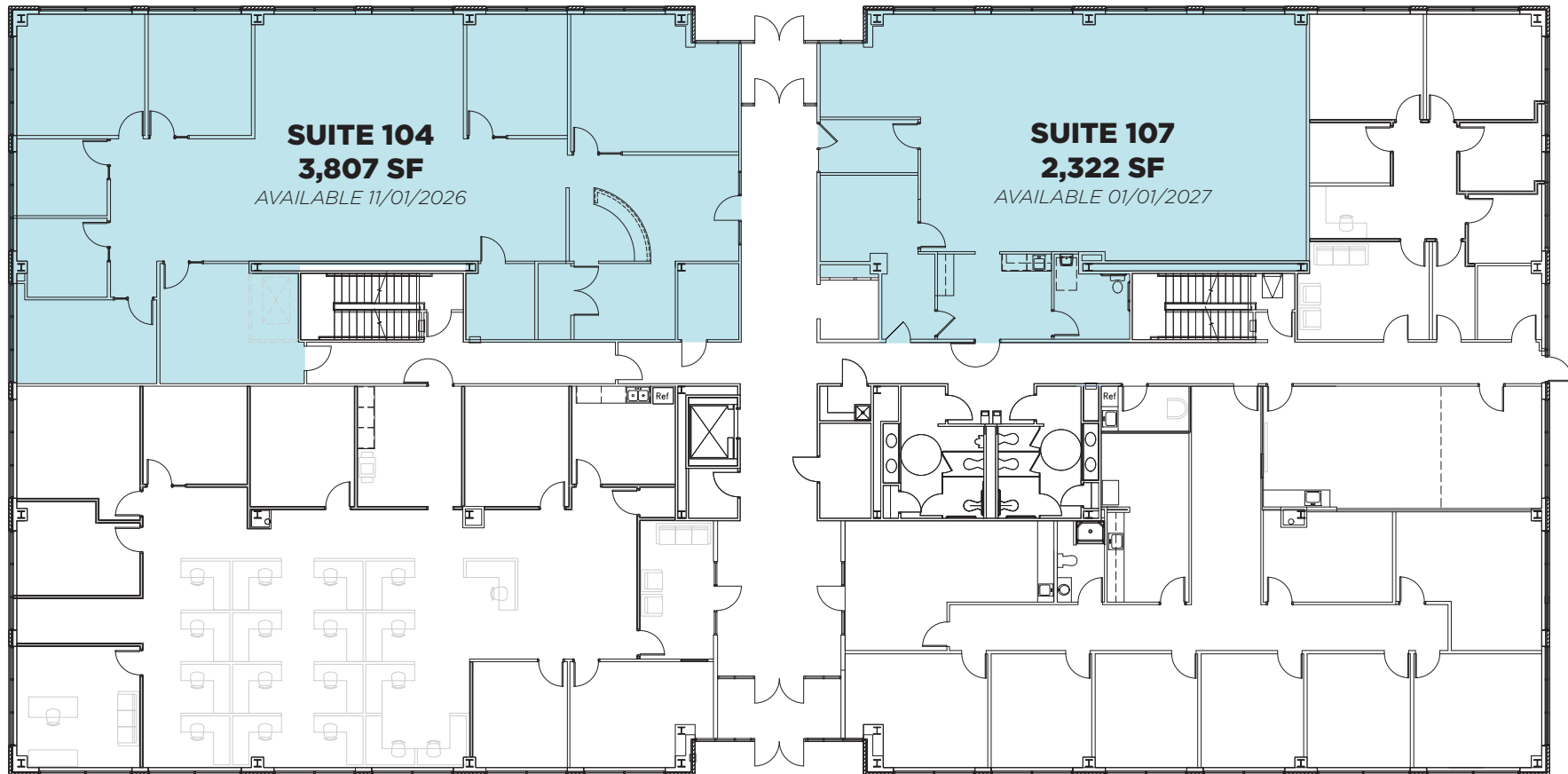
<b>Building Size</b>	34,052 SF	<b>Signage</b>	Building & Monument
<b>Space Available</b>	24,273 SF	<b>Parking</b>	5/1,000
<b>Floors</b>	2	<b>Lease Rate</b>	\$14.00 /SF Net
<b>Year Built</b>	2006	<b>Operating Expense</b>	\$8.00 /SF est.



# KENWOOD CORPORATE CENTER



FLOOR 1 | 6,129 SF



**SUITE 104**  
**3,807 SF**

AVAILABLE 11/01/2026

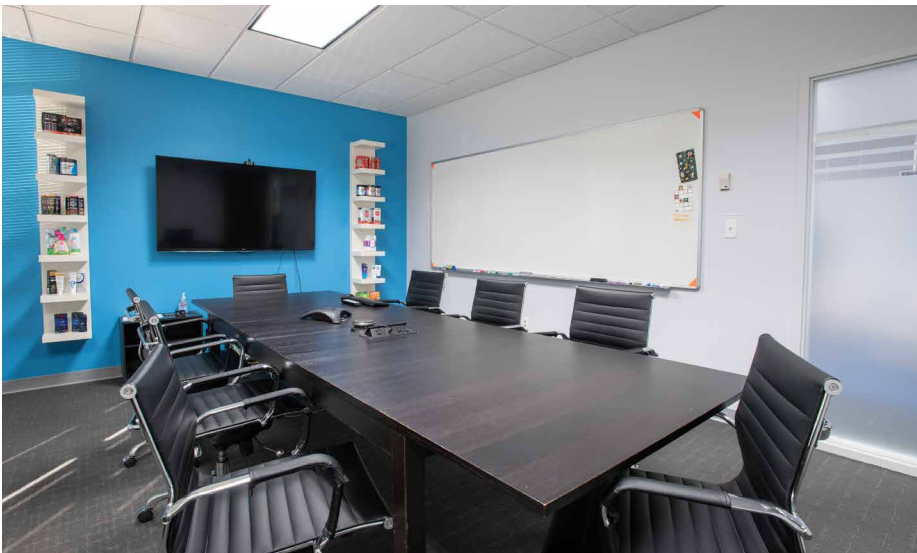
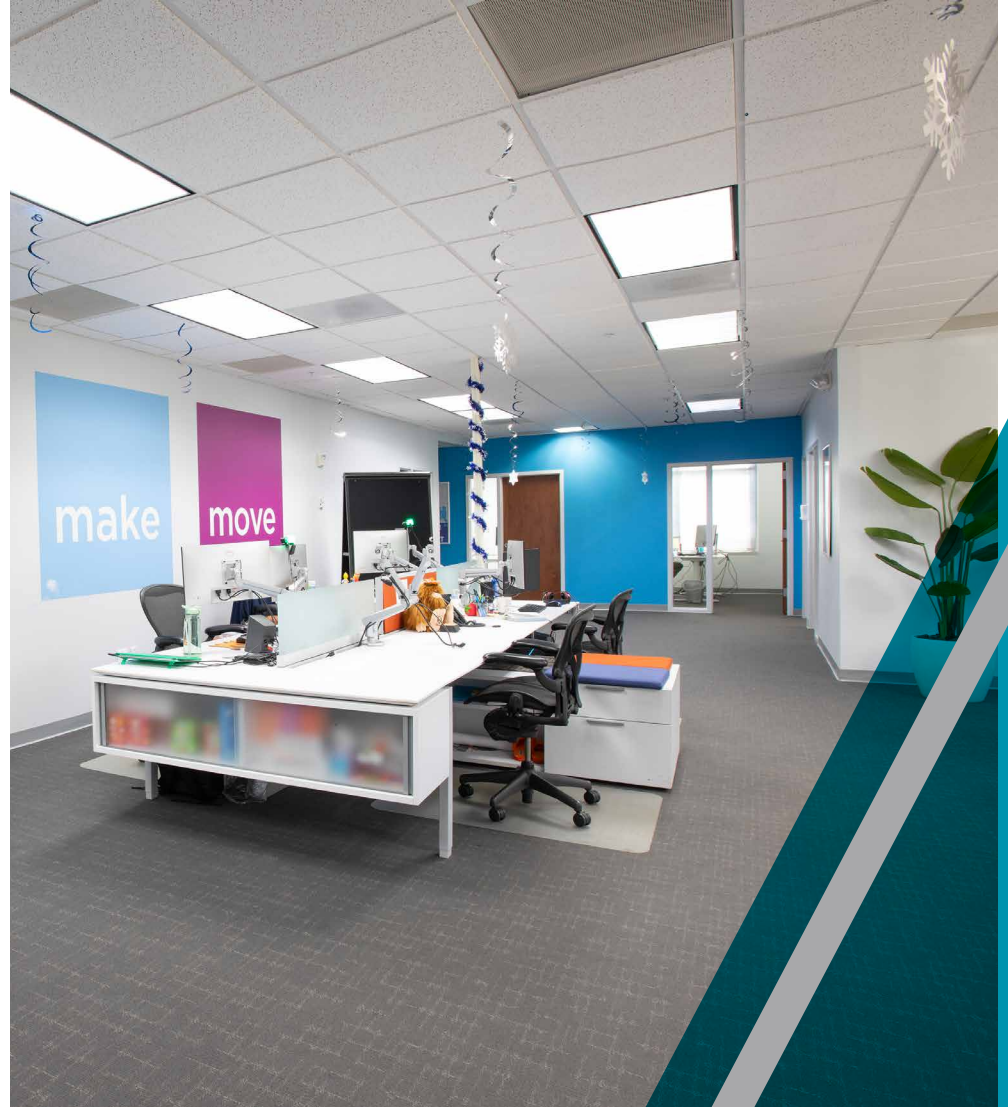
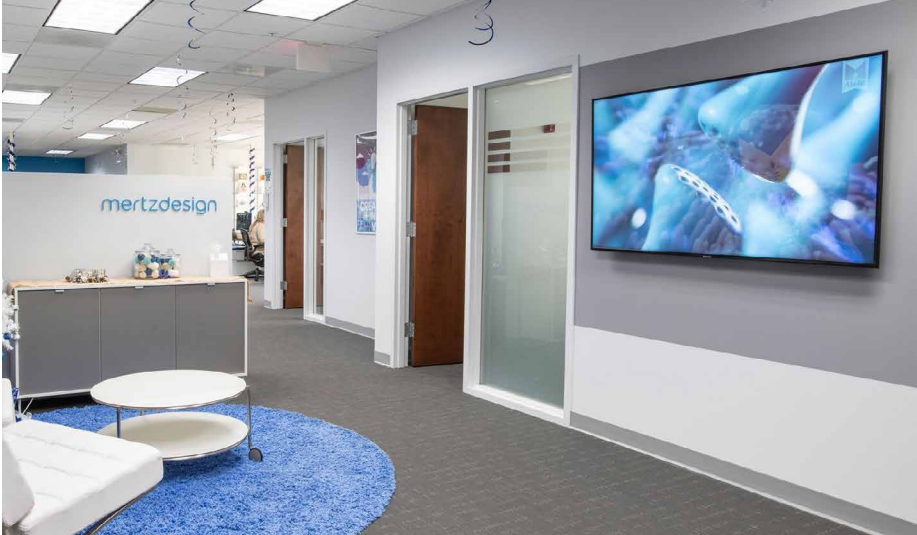
**SUITE 107**  
**2,322 SF**

AVAILABLE 01/01/2027

# KENWOOD CORPORATE CENTER



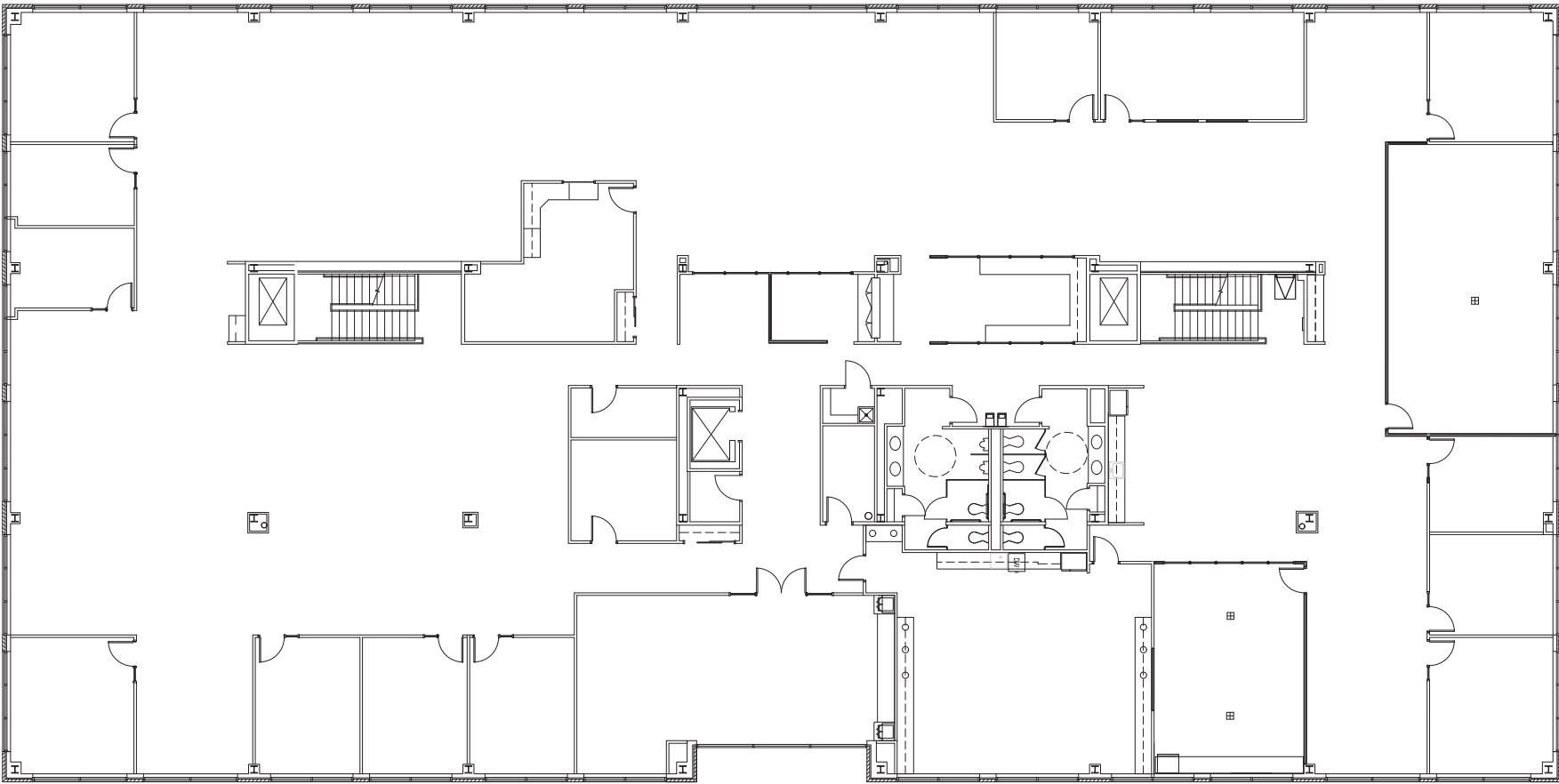
SUITE 104 | 3,807 SF



# KENWOOD CORPORATE CENTER



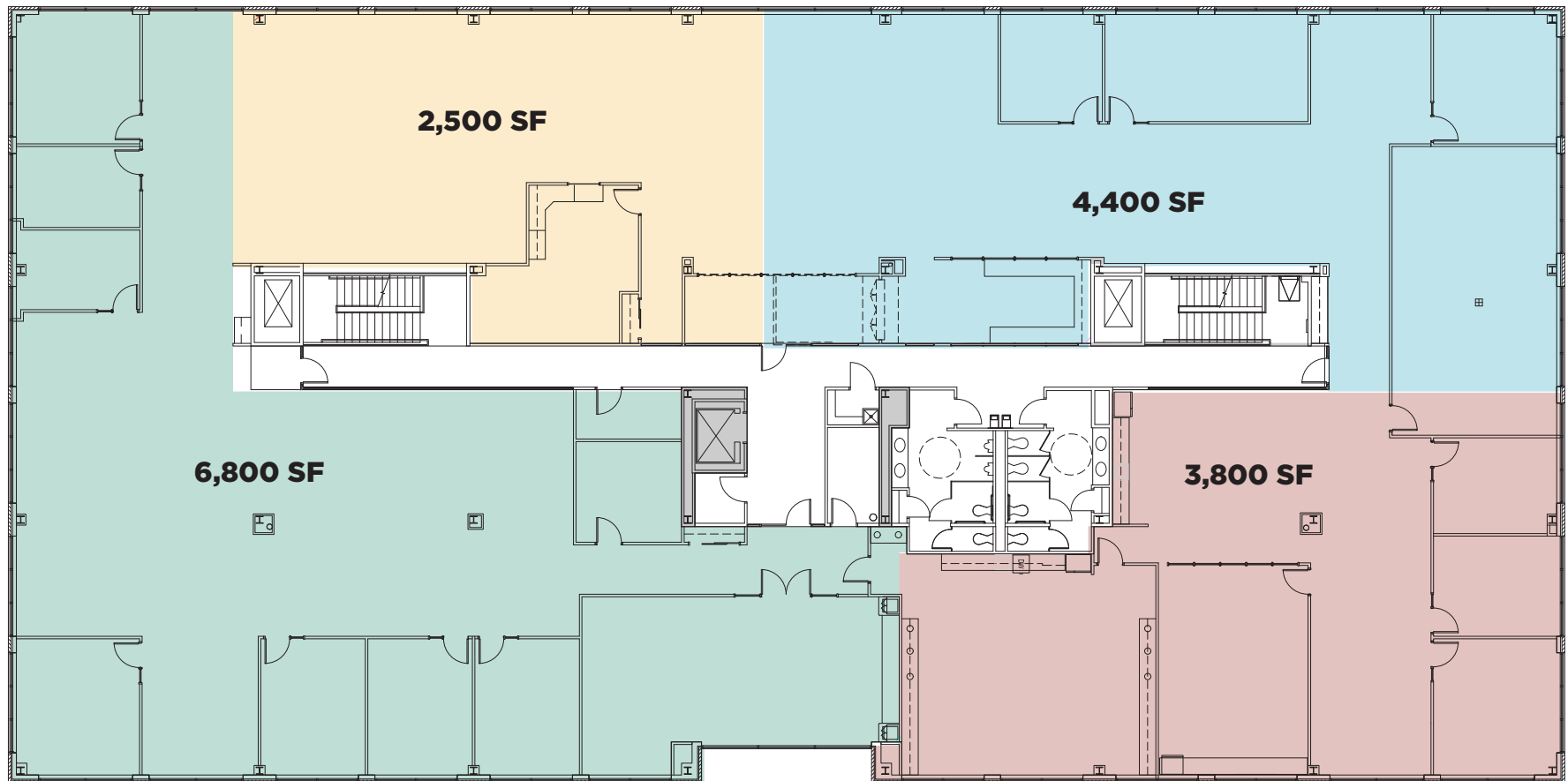
FLOOR 2 | 18,144 SF



# KENWOOD CORPORATE CENTER



## FLOOR 2 | DEMISING OPTIONS



# KENWOOD CORPORATE CENTER



FULL SECOND FLOOR AVAILABLE



Neighborhoods at Summit Park



Crossings of Blue Ash

Keystone Plaza

Downtown Blue Ash  
Redevelopment

49 Hundred



Kenwood Corporate Center

126

### Blue Ash Quick Facts

<b>13,369</b> Population	<b>\$104,189</b> Median HH Income
	52% more than the national average
<b>2,122</b> Total Businesses	<b>36,601</b> Employees



# KENWOOD CORPORATE CENTER





**For more information, please contact:**

**Digger Daley**  
Senior Director  
digger.daley@cushwake.com  
+1 513 763 3028

**Scott Abernethy, SIOR, CCIM**  
Senior Director  
scott.abernethy@cushwake.com  
+1 513 763 3013

201 E. Fourth Street, Suite 1800  
Cincinnati, OH 45202  
Main +1 513 421 4884  
cincyofficeadvisors.com

©2026 Cushman & Wakefield. All rights reserved. The information contained in this communication is strictly confidential. This information has been obtained from sources believed to be reliable but has not been verified. NO WARRANTY OR REPRESENTATION, EXPRESS OR IMPLIED, IS MADE AS TO THE CONDITION OF THE PROPERTY (OR PROPERTIES) REFERENCED HEREIN OR AS TO THE ACCURACY OR COMPLETENESS OF THE INFORMATION CONTAINED HEREIN, AND SAME IS SUBMITTED SUBJECT TO ERRORS, OMISSIONS, CHANGE OF PRICE, RENTAL OR OTHER CONDITIONS, WITHDRAWAL WITHOUT NOTICE, AND TO ANY SPECIAL LISTING CONDITIONS IMPOSED BY THE PROPERTY OWNER(S). ANY PROJECTIONS, OPINIONS OR ESTIMATES ARE SUBJECT TO UNCERTAINTY AND DO NOT SIGNIFY CURRENT OR FUTURE PROPERTY PERFORMANCE.

