

RIVERCENTER I

Convington, KY 41011



8,872 RSF Available For Sublease



REDUCED RATE!

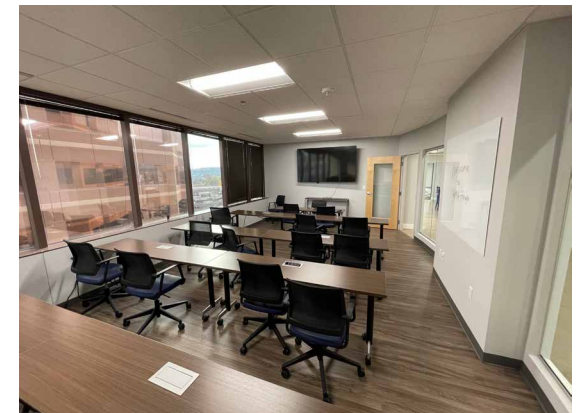
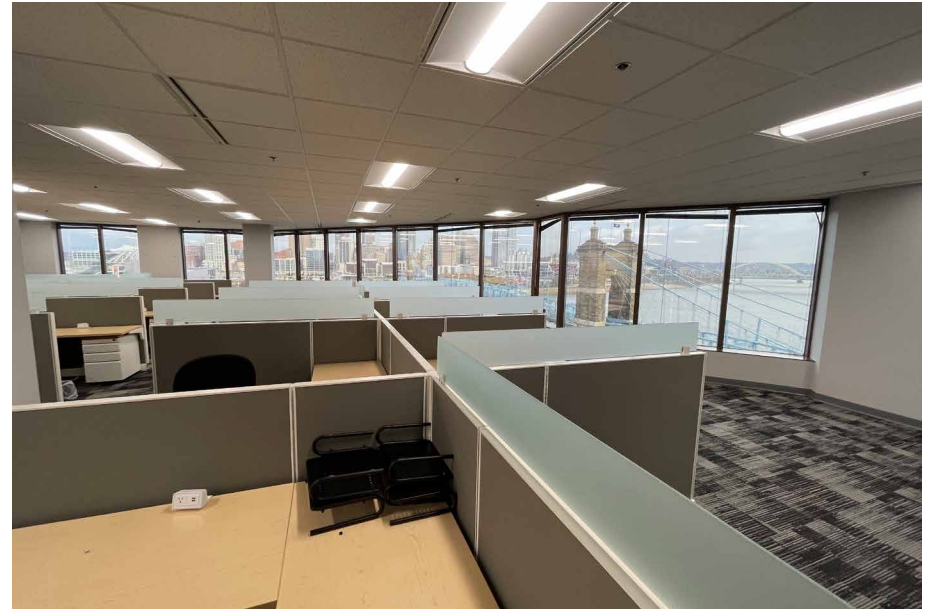
*NOW ASKING
\$19.45 /SF FSG*



HIGHLIGHTS

- Panoramic views of the Cincinnati skyline and Ohio River
- On-site fitness, media center, security and several unique eateries
- Adjacent to several hotels and entertainment areas
- Just a short walk across the Roebling Bridge to Cincinnati
- FULLY FURNISHED and move-in ready
- Master lease expires March 31, 2033
- Sublessor is willing to commit to shorter lease terms!

Address	50 E. RiverCenter Boulevard Covington, KY 41011
Building Size	301,981 SF
Year Built	1988
Parking	830-Space Parking Garage; Surface Lots Nearby
Building Type	Office
Typical Floor Size	16,745 SF
Number of Floors	19
HVAC	(3) Trane Chiller with VAV system Hot water heat

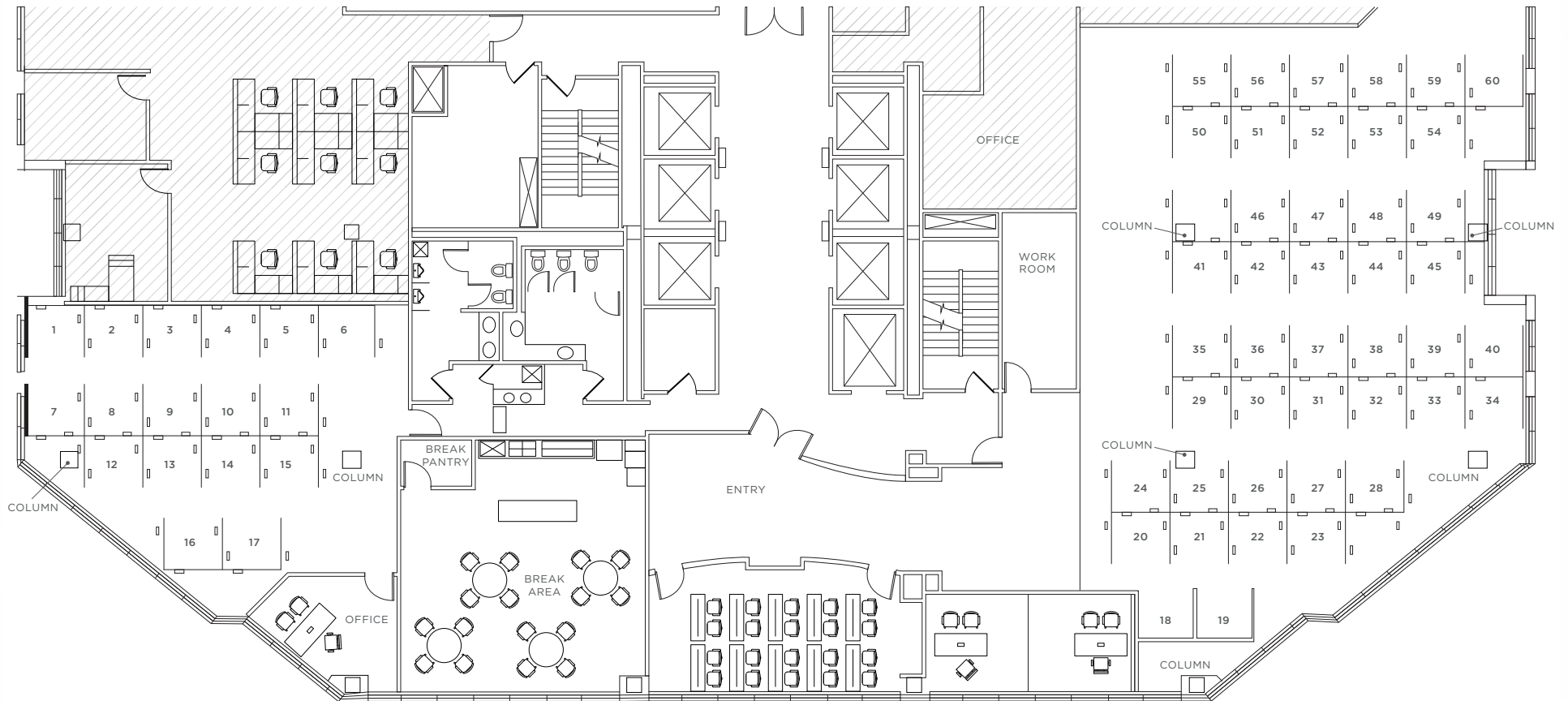


SUITE 725



FLOOR 7 | SUITE 725

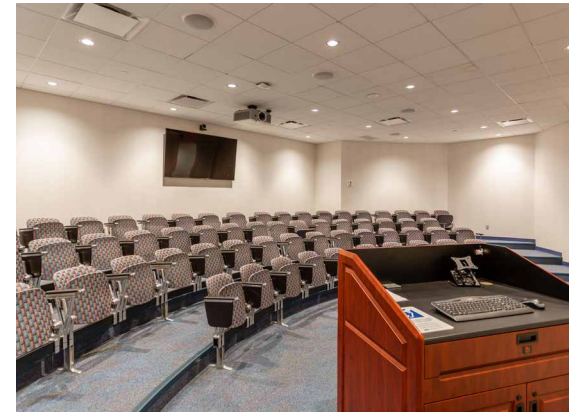
8,872 RSF



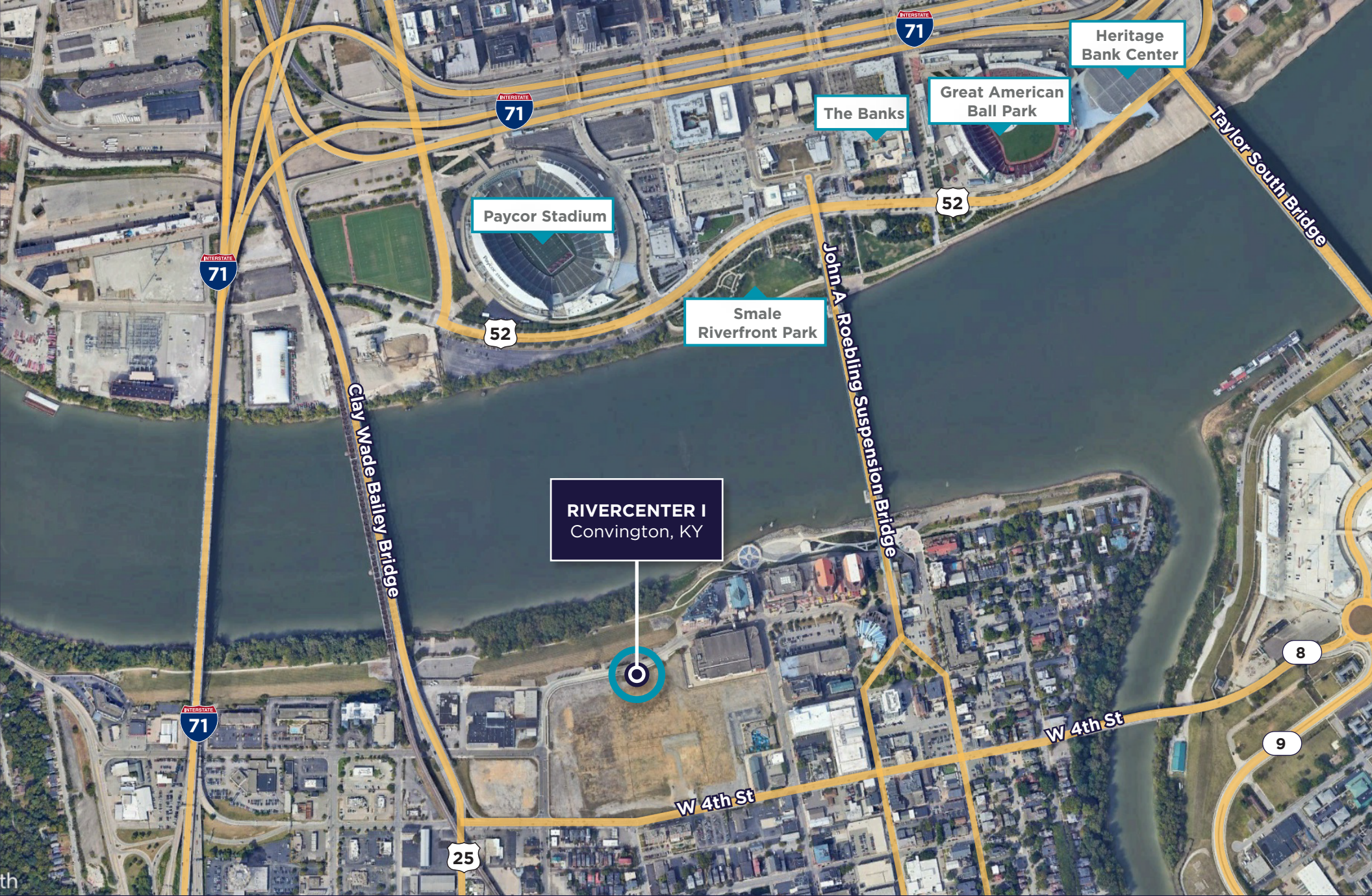
AMENITIES

- On-site building management and 24 hour uniformed security
- 75-seat auditorium/media center with adjacent meeting room
- Metropolitan Club, an exclusive member-only business and dining club located on the 19th floor
- Adjacent to Embassy Suites and Marriott hotels
- Scenic location with stunning views of the Cincinnati Skyline and Ohio River
- Nearby restaurants and entertainment venues

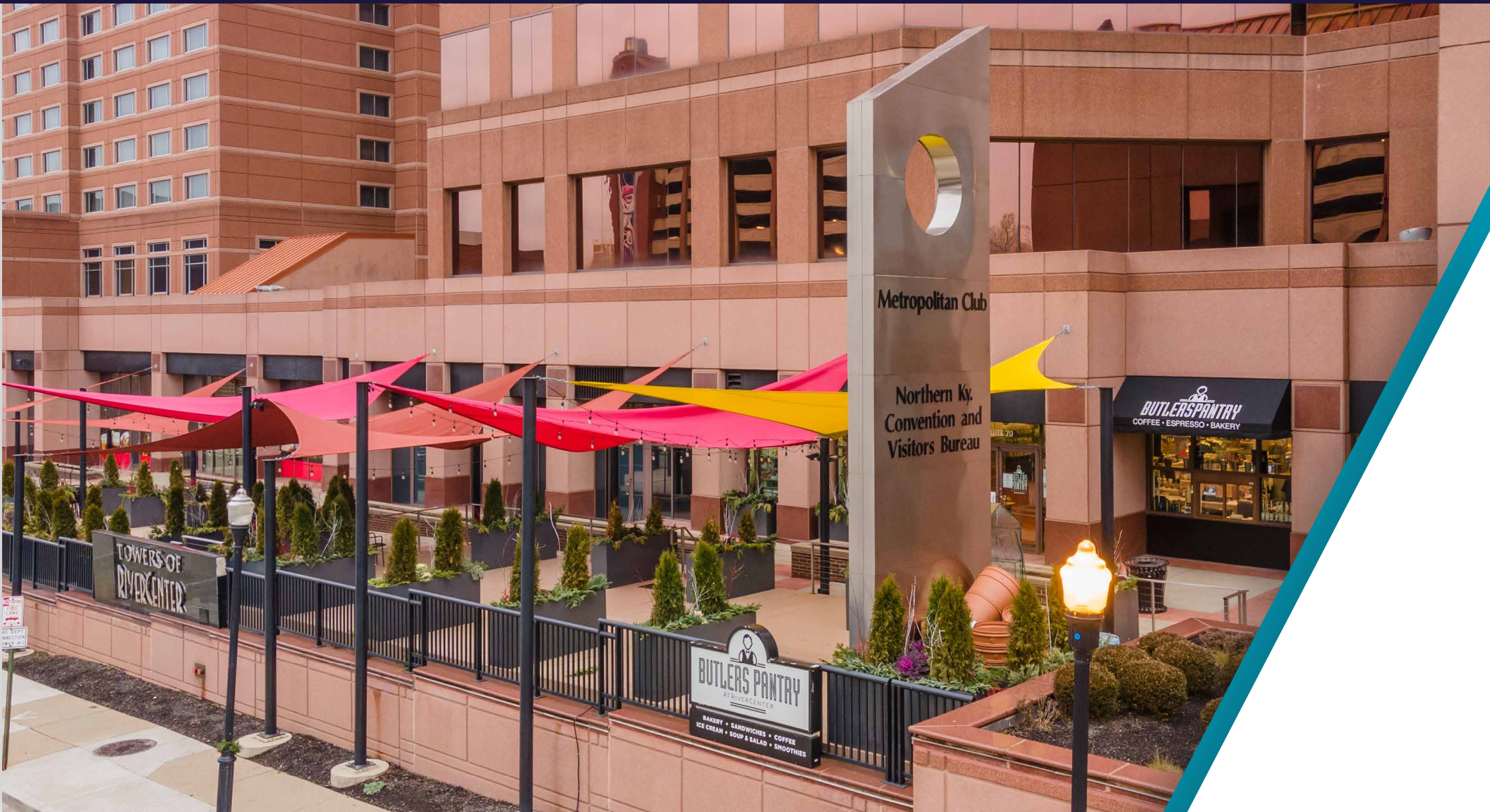




RIVERCENTER I



AERIAL MAP



For more information, please contact:

Joe Janszen
Senior Director
+1 513 549 3011
joe.janszen@cushwake.com

cincyofficeadvisors.com

©2024 Cushman & Wakefield. All rights reserved. The information contained in this communication is strictly confidential. This information has been obtained from sources believed to be reliable but has not been verified. NO WARRANTY OR REPRESENTATION, EXPRESS OR IMPLIED, IS MADE AS TO THE CONDITION OF THE PROPERTY (OR PROPERTIES) REFERENCED HEREIN OR AS TO THE ACCURACY OR COMPLETENESS OF THE INFORMATION CONTAINED HEREIN, AND SAME IS SUBMITTED SUBJECT TO ERRORS, OMISSIONS, CHANGE OF PRICE, RENTAL OR OTHER CONDITIONS, WITHDRAWAL WITHOUT NOTICE, AND TO ANY SPECIAL LISTING CONDITIONS IMPOSED BY THE PROPERTY OWNER(S). ANY PROJECTIONS, OPINIONS OR ESTIMATES ARE SUBJECT TO UNCERTAINTY AND DO NOT SIGNIFY CURRENT OR FUTURE PROPERTY PERFORMANCE.

